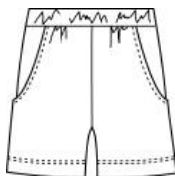


Enya shorts



Krymmel
● ● ● ● ●

English:

		92/98		104/110		116/122		128/134		140/146		152/158
B	½ waist	25,5		26,5		28		30		32		34
C	½ hip (approx 11 cm down)	30,9		32,3		34		36		38		41
S	inseam (incl hem)	8		9		10		11		12		13
U	front rise - incl waistband	18,4		19,6		20,8		22		23,2		24,4
U3	backrise - incl waistband	23		25		27		29		31		33

Tolerance: +/- 1-2 cm

Dansk:

		92/98		104/110		116/122		128/134		140/146		152/158
B	½ taljevidde	25,5		26,5		28		30		32		34
C	½ hoftevidde (ca.11 cm ned)	30,9		32,3		34		36		38		41
S	Indvendig benlængde	8		9		10		11		12		13
U	Skridtsøm - for	18,4		19,6		20,8		22		23,2		24,4
U3	Skridtsøm - bag	23		25		27		29		31		33

Tolerance: +/- 1-2 cm